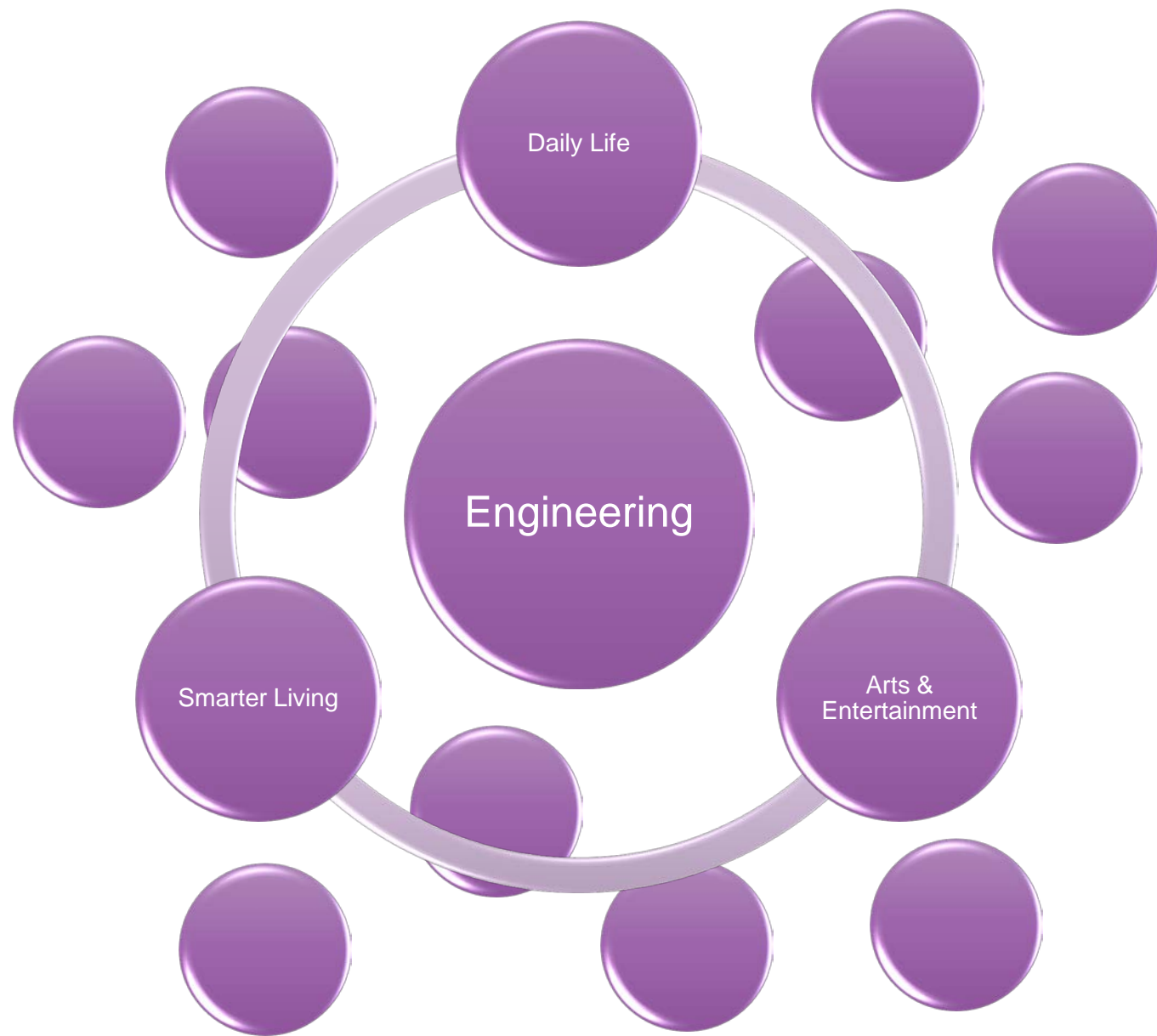


The IET Hong Kong Engineering for Smarter Living

Justina CY Ho
The IET Council Member
The IET Hong Kong Immediate Past Chairlady

「工程伴理行」 活動領域：

「生活中的工程」
「藝術及娛樂工程」
「智慧生活」

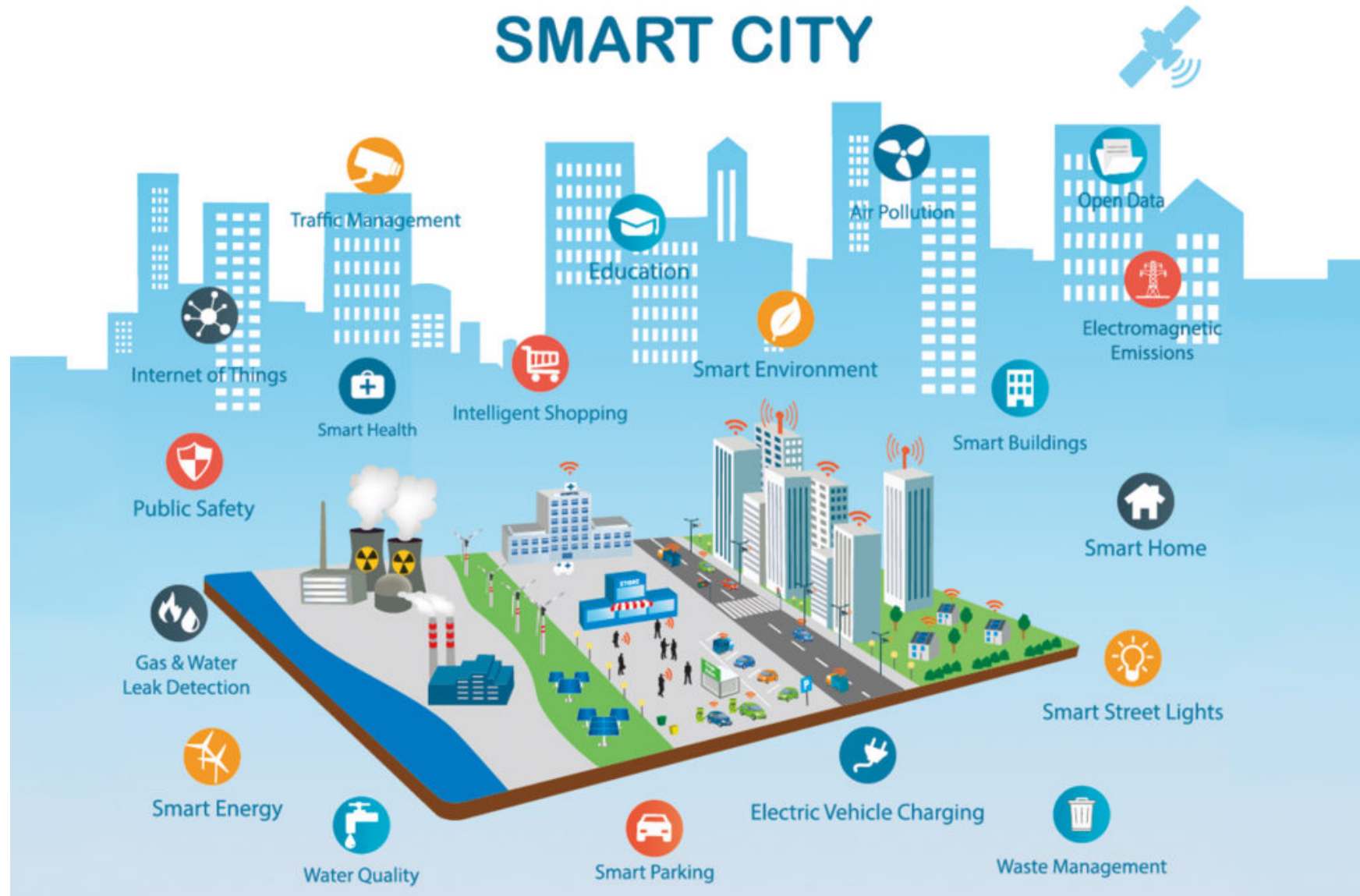


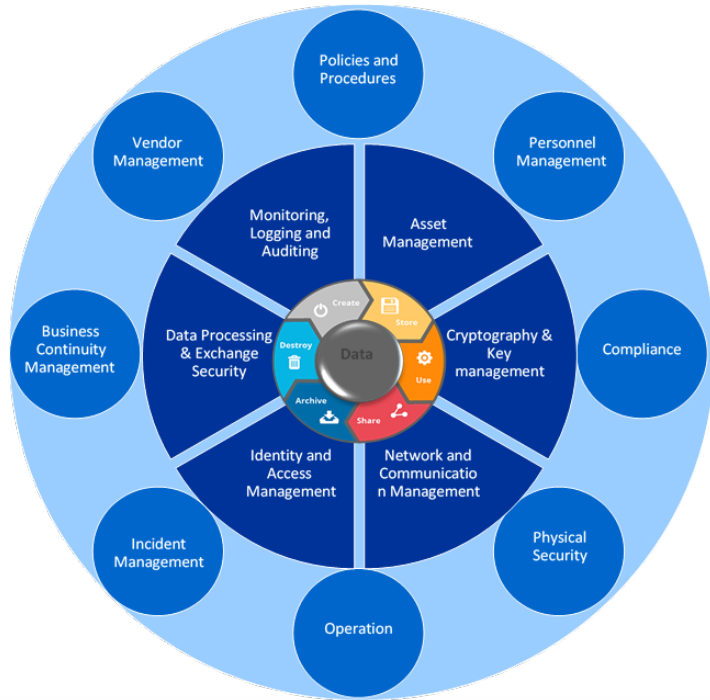
香港智慧城市 發展領域：







智慧出行
智慧生活
智慧環境
智慧市民
智慧政府
智慧經濟



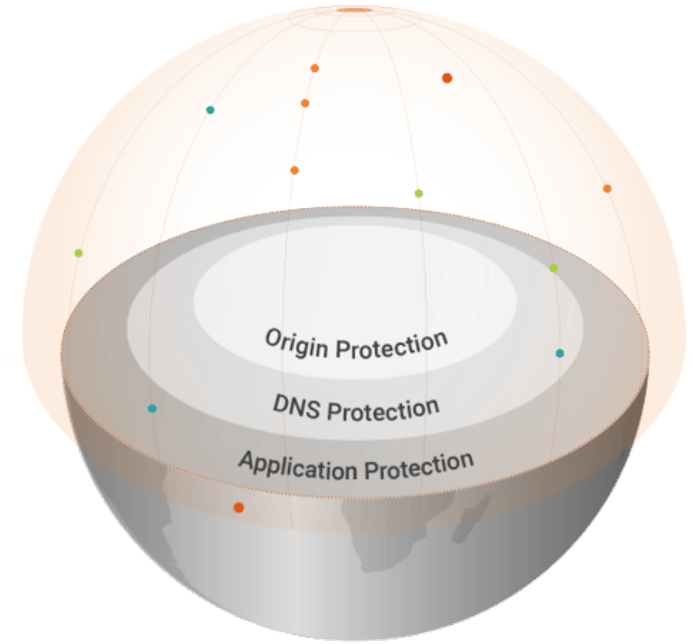
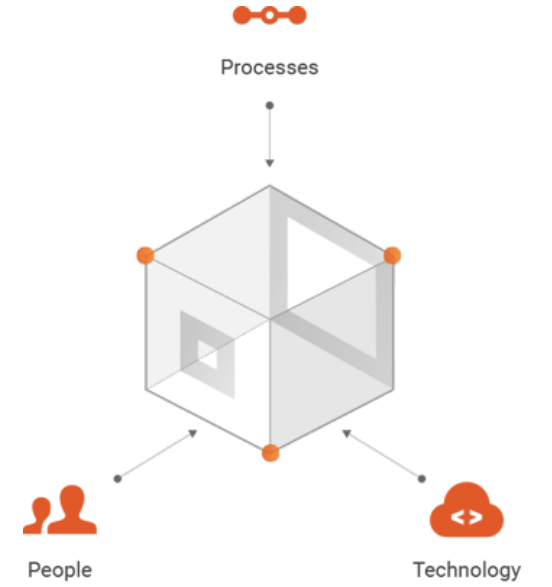
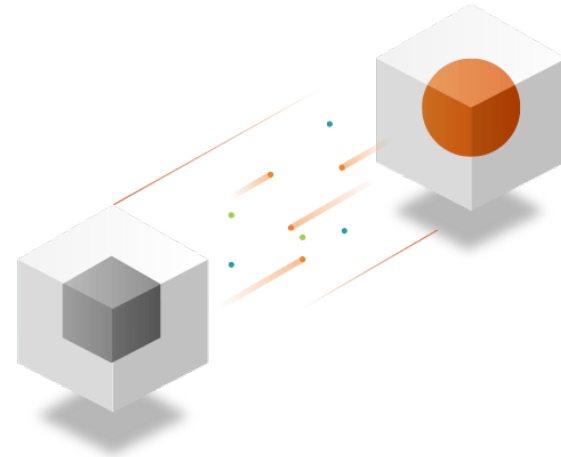
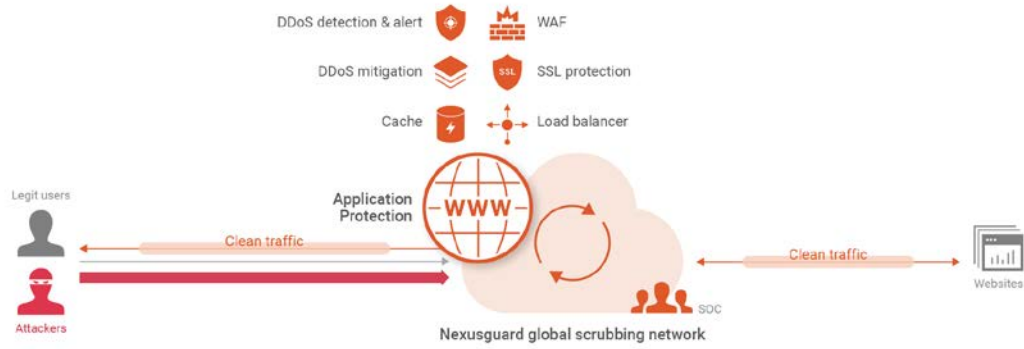
SMART CITY

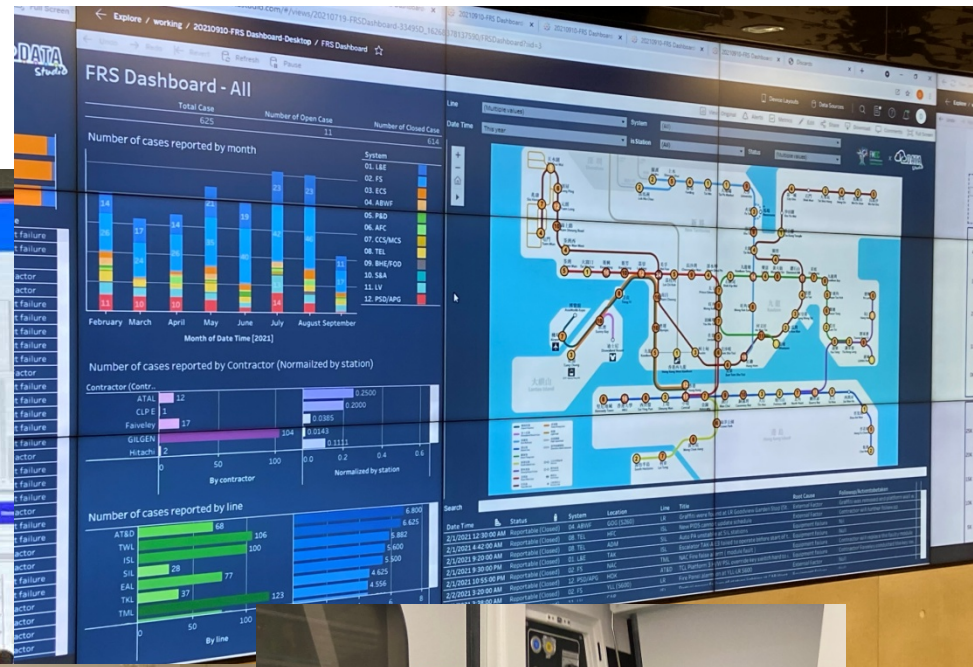




VOLUME	VARIETY	VELOCITY	VERACITY	VALUE	VARIABILITY
The amount of data from myriad sources.	The types of data: structured, semi-structured, unstructured.	The speed at which big data is generated.	The degree to which big data can be trusted.	The business value of the data collected.	The ways in which the big data can be used and formatted.
					







STEM Ambassador Programme

Who we work with



What we facilitate

STEM Inspiration activities and CPD for staff

- face-to-face and online CPD
- study visits and placements with R&D institutions, employers and academia
- school based support
- mentoring & coaching
- networking

Resource engagement

- physical and online curated resources focussed on STEM subjects
- cutting-edge research collections
- STEM careers information and curriculum guidance



STEM enrichment and engagement activities for young people and families

- practical activities, technical advice
- STEM-based competitions and challenges
- extra-curricular STEM Clubs
- information, advice and guidance on routes into STEM careers and pathways
- work experience, mentoring or placements with STEM employers



Outcomes



Improvements for teachers, support staff and informal educators in their:

- STEM subject and pedagogical understanding
- confidence, motivation and enthusiasm for STEM subjects
- competence and quality of leading, teaching or supporting STEM subjects
- understanding how to contextualise the curriculum with cutting-edge STEM knowledge, employability skills and STEM-related careers information
- retention and career progression

Increasing STEM Ambassadors:

- professionalism, communication, team working, organisational, mentoring, leadership, delegating and relationship management skills
- understanding of education and how to inspire young people in STEM
- retention in a STEM-based career

Helping employers to:

- develop an enthusiastic, motivated and skilled STEM-based workforce
- access an increasingly competent pool of young people with employability and STEM skills with the potential to become future employees
- better inform young people and parents about STEM career pathways and the employment opportunities available with STEM employers

Increasing young people's:

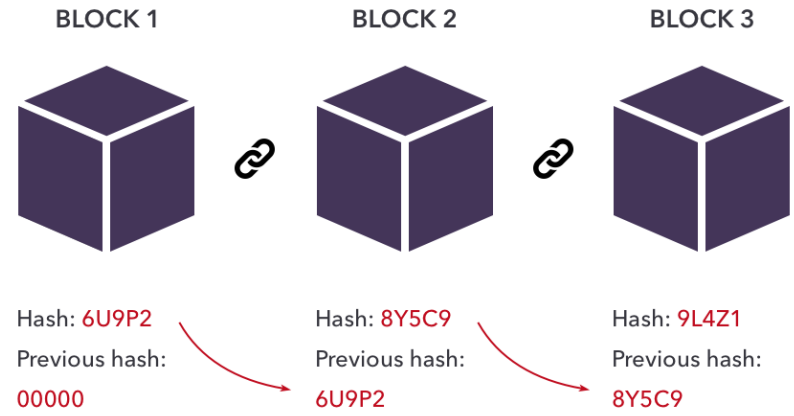
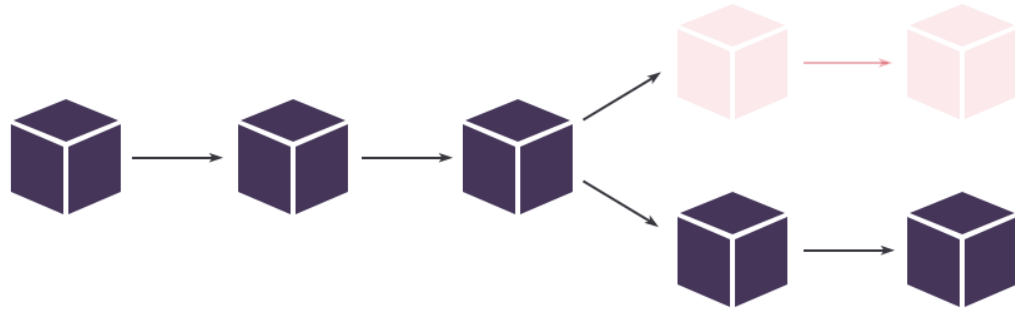
- engagement, interest, enjoyment and achievement in STEM subjects
- development of employability and practical skills
- post-16 pursuit of STEM subjects and progression into STEM-related study and careers



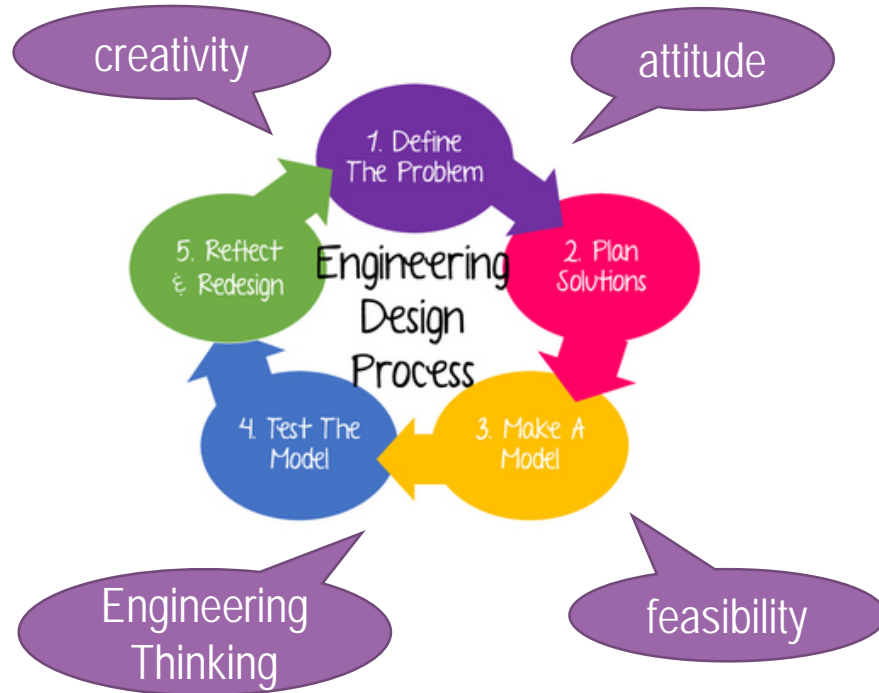
Vision
To achieve a world-leading STEM education for all young people across the UK



Network of STEM experts: STEM Ambassador Hubs, Science Learning Partnerships, partners in SWANI, employers and supporters



What is STEM?



Scientific Explanation =
Claims + Evidence +
Reasoning

Engineering Thinking

- Faraday Challenge
- *FIRST* Lego League
- *FIRST* Tech Challenge

Engineering Life

- Future Engineer Project
- STEM 4 Girls Mentorship Programme
- Young Woman Engineer of the Year Award
- Young Engineers Mentorship Programme
- Talks / Visits / Job Shadowing

Competitions

- Young Professionals Exhibition & Conference
- Present Around the World Competition
- Underwater Robot Challenge
- Future Engineer Competition
- STEM Education Project for the Youth
- Robocon / Mini-Robocon

Thank You

<http://www.theiet.org/hongkong>

<http://www.facebook.com/IETHongKong>

admin@theiet.org.hk



HK工E

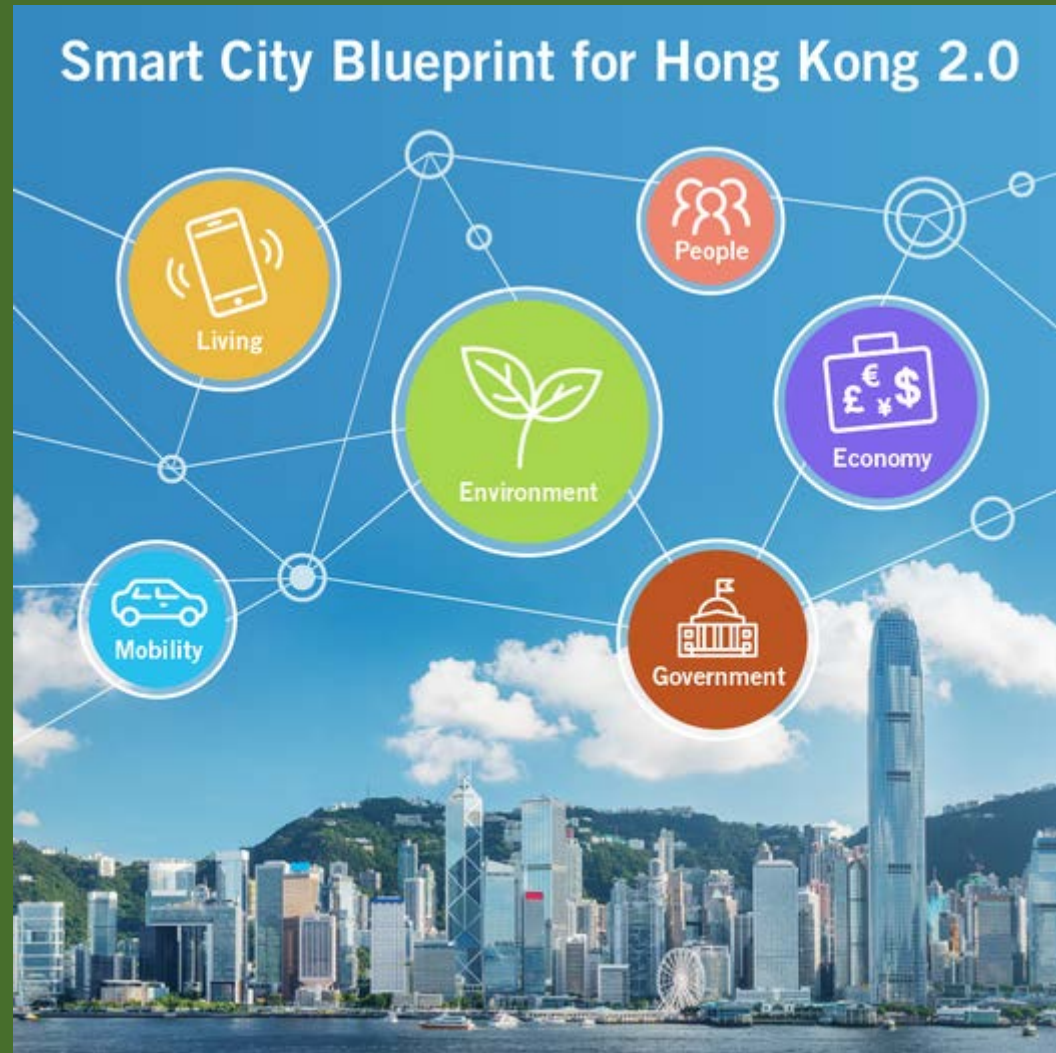
工程伴理行 智慧生活

香港工程師學會

陳浩廷工程師



智慧城市藍圖2.0



English Version



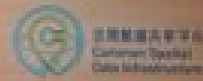
中文版



智慧政府

繼續推廣智慧政府創新實驗室，邀請資訊科技界提交技術解決方案及產品建議，以提升公

發展局
Development Bureau



地理空間實驗室
Geospatial Lab



發展局地理空間實驗

智慧經濟

將軍澳工業邨的數據技術中心已落成；預計2022年先進製造業中心亦會落成



香港科學園先進製造業中心

智慧市民

智慧環境

擴大香港科學園的培育計劃及數碼港的共用工作間

採用先進污泥預處理技術轉廢為能 **新**



香港科學園創新斗室



T. Park

智慧城市藍圖以外....



物聯網

培育創科人才

香港大學創科翼



香港科技園 IoT Centre



科技大學機械人學院



PolyU Aviation Simulator

綠色能源

醫療科技



南丫風采發電站



啟德發展區區域供冷系統



中文大學醫療機械人創新技術中心

工程伴理行

- 工程師亦可以協助學校參與不同類型**STEAM**活動，例如香港工程師週和比賽等。



2023年3月 香港工程師週



謝謝!

記得Comment, Like
同 Share 我地o既
Page 同埋Channel ar!

🔍 HKIE 🎤



The HKIE



@the_hkie



HKIE Channel



The HKIE